

Anti-BTN2A1 mIgG1 Antibody (mAb 7.48)

Product information

GM-52820AB-10	10 µg
GM-52820AB-100	100 µg
GM-52820AB-1000	1 mg

Antibody Information

Species Reactivity	Human
Clone	mAb 7.48
Source/Isotype	Monoclonal Mouse IgG1 /λ
Application	Flow Cytometry
Specificity	Detects BTN2A1
Gene	BTN2A1
Other Names	BTF1; BT2.1; BTN2.1; DJ3E1.1; BK14H9.1
Gene ID	11120
Background	This gene encodes a member of the immunoglobulin superfamily. The gene is located in a cluster of butyrophilin-like genes in the juxta-telomeric region of the major histocompatibility complex on chromosome 6. The encoded protein is an integral plasma membrane protein involved in lipid, fatty-acid, and sterol metabolism. Alterations in this gene may be associated with several disease states including metabolic syndrome.
Storage	Store at 2-8°C short term (1-2 weeks). Store at ≤ -20°C long term. Avoid repeated freeze-thaw.
Formulation	Phosphate-buffered solution, pH 7.2.
Endotoxin	< 1 EU/mg, determined by LAL gel clotting assay

Data Examples

Flow cytometry

H_BTNA1 HEK-293 Cell Line (Catalog # GM-C28026) was stained with Anti-BTNA1 mlgG1 Antibody (mAb 7.48) (Catalog # GM-52820AB) or isotype control antibody, followed by anti-Mouse IgG APC-conjugated Secondary Antibody.

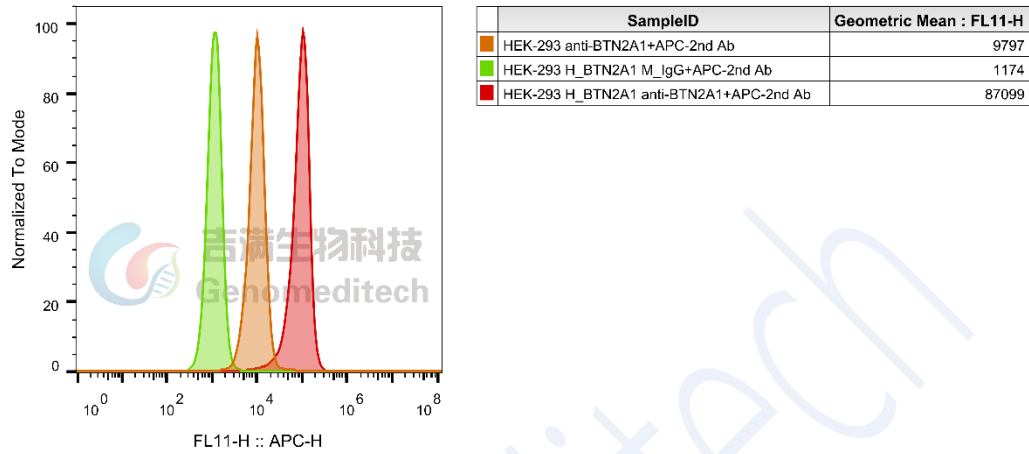


Fig 1. FACS